



MULTIJECT LIQUID ADDITIVE SYSTEM FOR COILED TUBING

Fine-tune your CT chemical operations.

While coiled tubing (CT) provides a reliable method for well intervention, there are several common problems that can diminish CT efficiency and increase NPT. Potential issues include wasted chemicals, poor operational recordkeeping, inconsistent concentrations, less-than-optimal viscosity, and increasing friction as drillout debris accumulates. At NextTier, we're out to make those problems a thing of the past.



Precise mixing and real-time data to optimize fluid performance.

Paired with the unsurpassed CT expertise of NextTier, our Multiject liquid additive system (LAS) gives you all the tools you need to achieve the best possible CT results. With NextTier providing the overall CT design – including the CT unit, chemical mixing and fluid pumping – operational efficiency and quality control increase dramatically.

NEXTIER

A CLOSER LOOK AT THE MULTIJECT LAS

FEATURES AND BENEFITS

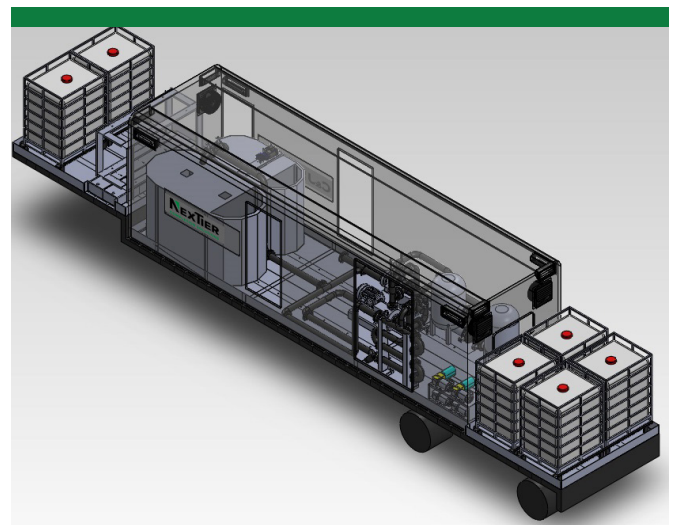
- Closed-system, direct-injection design delivers precise mixing in a controlled environment.
- Unique features and capabilities improve CT deployment and reduce NPT:
 - Data acquisition and monitoring enhance ability to validate chemical performance and determine if adjustments are needed.
 - Direct-injection baffle system provides on-the-fly capability to fine-tune the mixture as conditions change along the wellbore.
- 100% redundancy enables conventional mix methods in case of any interruption to LAS.

TOP-TIER COMPONENTS

- Direct-injection, baffled shear system
- Automatic bypass system
- Generators: two 33-kW Kubota
- Centrifugal pumps: two 4-in., 10-bbl/min feed
- Chemical flow meters: eight, to verify chemical flow and totals
- Filtration system: two sock-filter pods, capable of various micron ratings
- Injection pumps: four rotary, positive displacement
- Tank high-level auto shutoff and tank low-level auto refill
- Mixing tanks: one 30-bbl and one 18-bbl, centrifugal circulation, with high-speed mixers and laser level control (for batch mixing or pumping abrasive fluids)
- Automatic dye-injection system
- Heated and cooled operator station
- Wi-Fi and touchscreen controls with TOC BOX connectivity and UPS backup
- Data logger with post-job treatment report

Reliable, redundant design with real-time responsiveness

In a single unit, the Multiject LAS includes all the components of a fully functional mixing plant, plus a liquid additive system. With built-in redundancies and real-time data acquisition, you're able to improve efficiency, reduce NPT and optimize fluid performance.

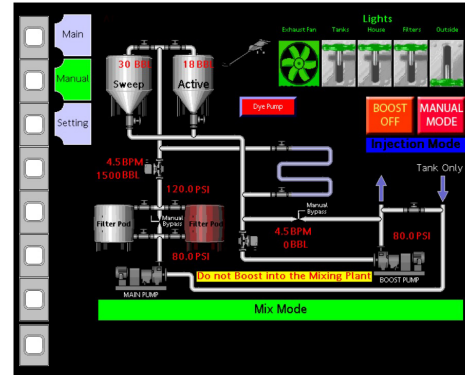


Easy interface for on-the-fly changes.

With the Multiject LAS, intuitive operation is built in. Digital displays provide detailed operational information in real time. Touch-screen controls enable quick adjustments. The result is more efficient, reliable and accurate fluid performance.



The main screen shows real-time total volumes and injection rates of all pumped chemicals. It also provides clear historical data related to all event changes.



The manual screen provides instant status and tracking of where fluid is flowing through the system, open/closed status of valves, flow rates, pressures and tank levels.



To optimize your CT operations with the Multiject LAS, contact your local NextTier representative today.

NEXTTIER



NexTier is a leading provider of integrated completions, focused on the most demanding land basins in the US. Across the nation, we are committed to helping the most demanding producers accelerate production through proven, integrated completion solutions. Our focus on safety, innovation and efficiency drives leading results for our customers.



3990 Rogerdale | Houston, TX 77042 | 713-325-6000

© 2019 NexTier Completion Solutions Inc.

Sales of products and services by NexTier Oilfield Solutions Inc. (through any of its operating companies) will be in accord solely with the terms and conditions contained in the contract between NexTier Oilfield Solutions Inc. (or any of its subsidiaries) and the customer that is applicable to such sale.

NEX-19-272

NexTierOFS.com