



The NexTier fiber-optic advantage: Downhole frac visualization in real time.

From toe to heel, the entire length of your lateral wellbore represents incredibly valuable subsurface real estate. That's why it's critical to make every single foot count. And if you're using repetitive, cookie-cutter frac designs, you could be missing out on serious oilfield ROI.

NexTier has a better way – the IntelliStim frac optimization system. It informs your frac treatments with fiber-enabled data feeds and diagnostics to optimize every aspect of surface and downhole completion activities:

- Offset well and near-wellbore monitoring
- High-resolution subsurface measurements
- 3D frac visualization while pumping
- Stage-by-stage performance assessments

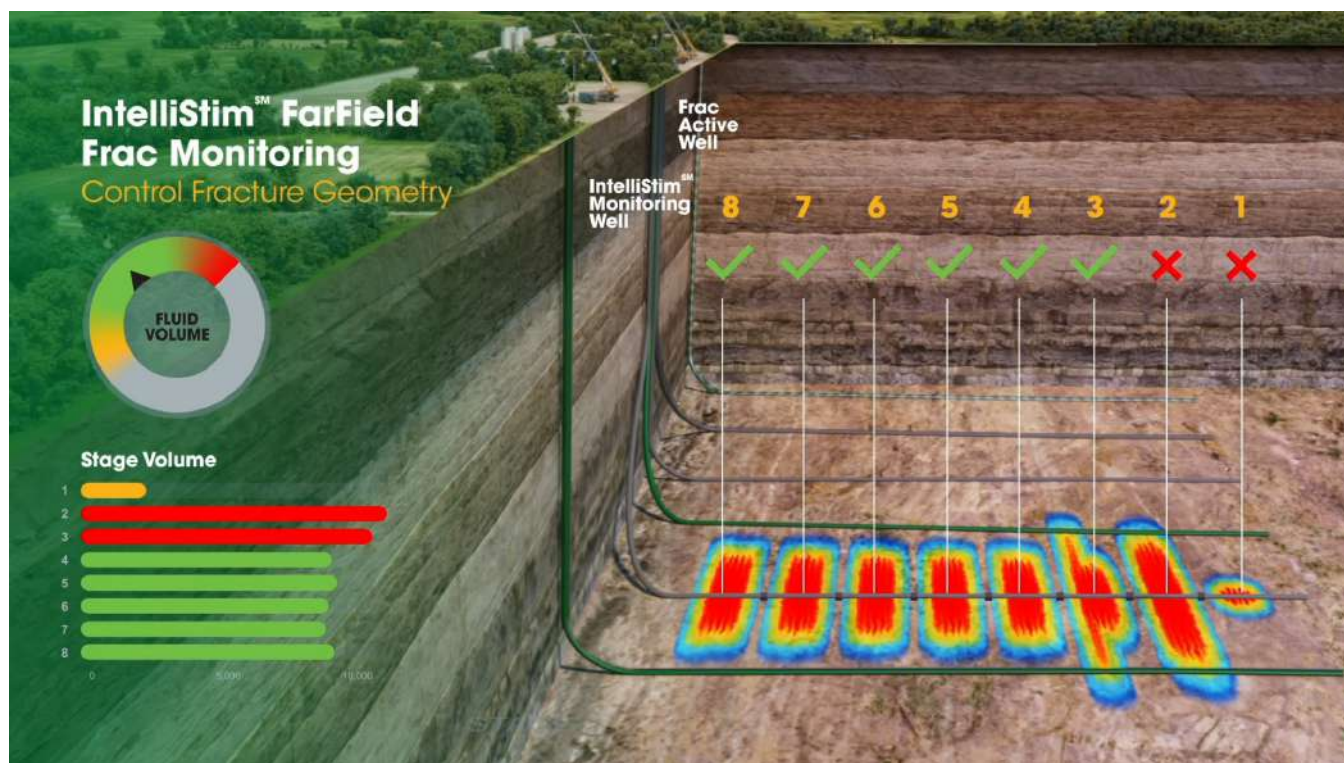
All surface and downhole activities are hosted on the NexHub™ Digital Center and displayed using the industry-leading Corva visualization platform.

Unprecedented frac control along the entire lateral.

State-of-the-art fiber optics deliver superior data during pumping, reduced completion cost, lower risk, and optimal cluster efficiency in every stage.

Precise crosswell monitoring and microseismic surveys. More accessible than ever.

Far-field interactions between parent and child wells can drastically diminish oilfield profitability. But with IntelliStim downhole visualizations, it's easier than ever to make preventive adjustments and mitigate these harmful interactions. Powered by Silixa's Carina* sensing technology and Constellation fiber-equipped wireline cable, this unsurpassed sensing system can be repeatedly deployed and retrieved by a NexTier wireline truck, which gives you greater flexibility to conduct surveys in more wells.



Real-time crosswell feedback gives you the power to optimize frac effectiveness and stimulated reservoir volume stage by stage – to create the most productive wells possible.

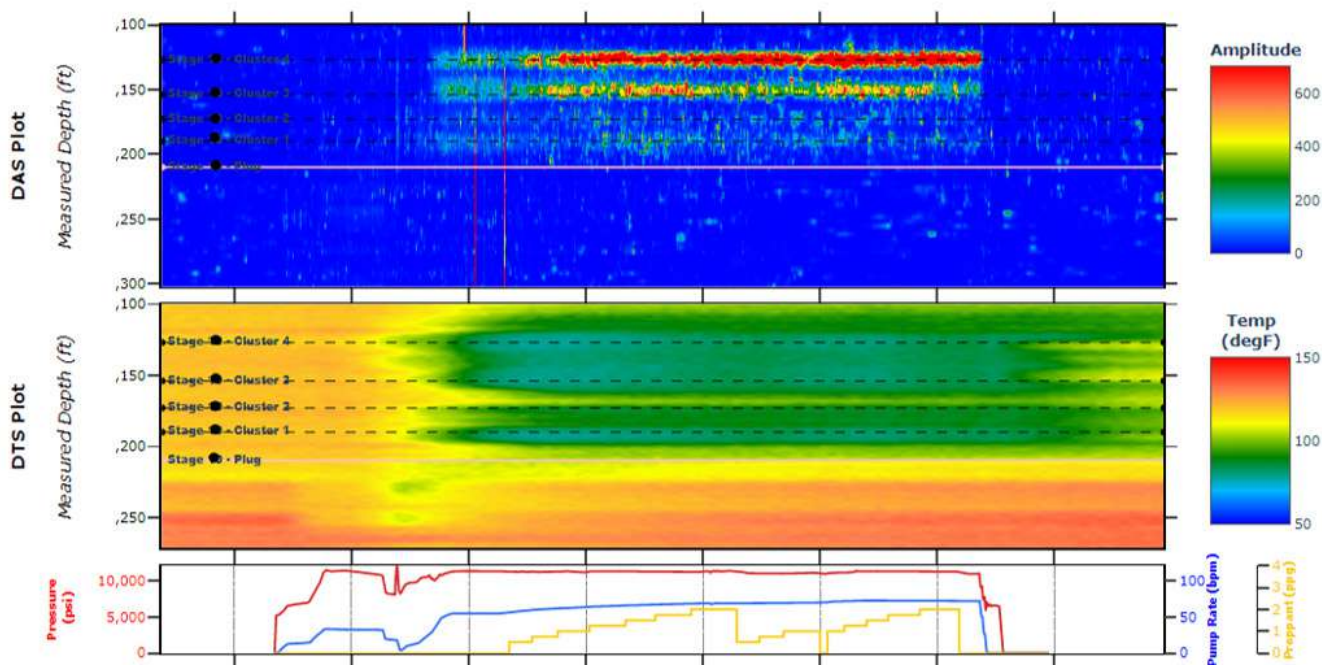
It achieves the industry's most accurate measurements and highest signal-to-noise ratio in a cost-effective package – so multiple offset wells can identify events farther from the wellbore and deeper in the reservoir.

**Carina is a registered trademark of Silixa Ltd*

Permanently installed fiber optics? We've got you covered.

If you're ready to begin completions on a well with a permanently installed fiber-optic cable, we can provide valuable, near-wellbore insight to optimize pumping in every stage. With Silixa technology integrated into our data van, we can instantly visualize how your treatment design is performing.

In-depth data gives us a direct downhole view to assess crucial parameters – including lateral coverage, cluster efficiency, stage isolation, diversion success, and zipper or simul-frac effectiveness. Armed with this valuable information, we can adjust subsequent stages to help ensure optimal frac performance.



Permanently installed fiber optics provide comprehensive insight to identify understimulated frac clusters, validate stage isolation, calibrate treatment models, and optimize stimulation designs in real time.

Get a superior view into surface/subsurface interactions.

Made possible by an exclusive partnership between NexTier and Silixa, our proprietary IntelliStim system delivers real-time measurements and visualizations, combining all these tools in one high-performance package:

- Wireline-deployed and permanently installed fiber-optic sensing
- NexHub™ remote operational and engineering support
- LateralScienceSM pre-frac diagnostics services
- WellPulseSM offset-well monitoring and diagnostics
- Silixa well-sensing technologies

It empowers all decision makers – whether at the wellsite or from a remote location – with precise control to make quick, data-informed adjustments.

Tap into the future of smart completions.

Ready to unearth a wealth of integrated completion efficiencies and downhole data visualization in your frac fields? Contact your NexTier representative, and we'll help you bring it all together.



NexTierOFS.com